

ANNEXURE –C

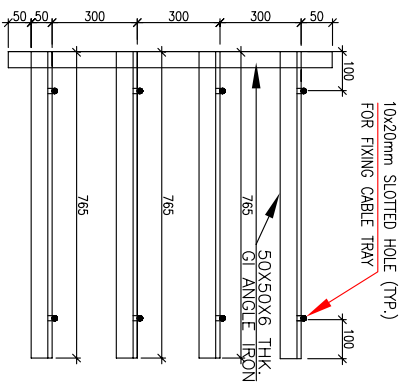


FIGURE –1

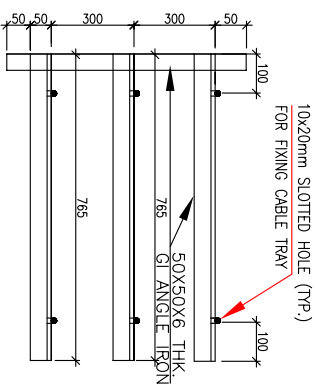


FIGURE –2

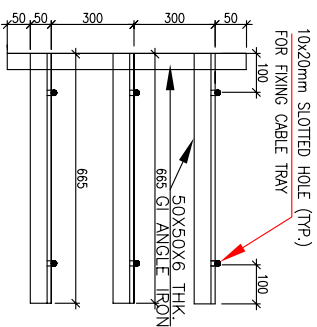


FIGURE –3

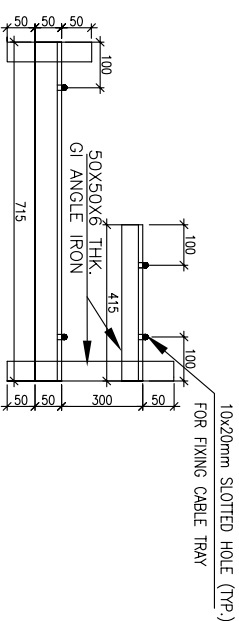


FIGURE –4

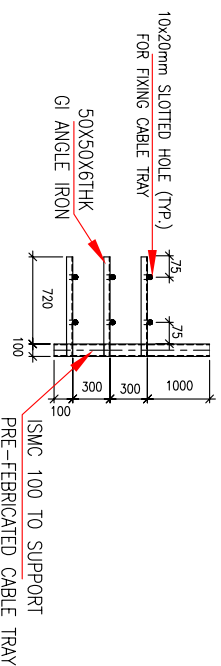


FIGURE –7

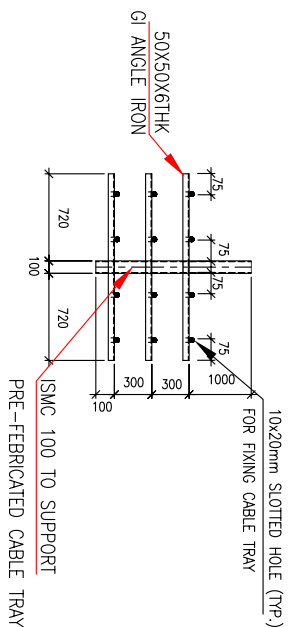


FIGURE –6

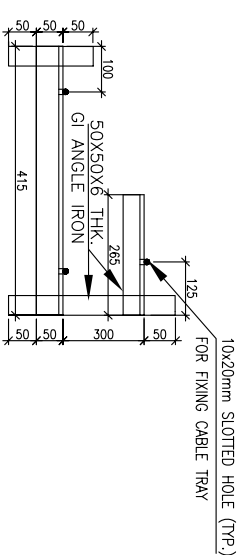
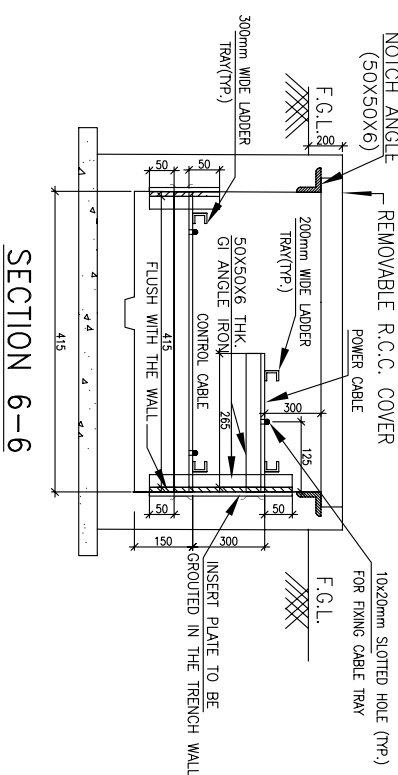
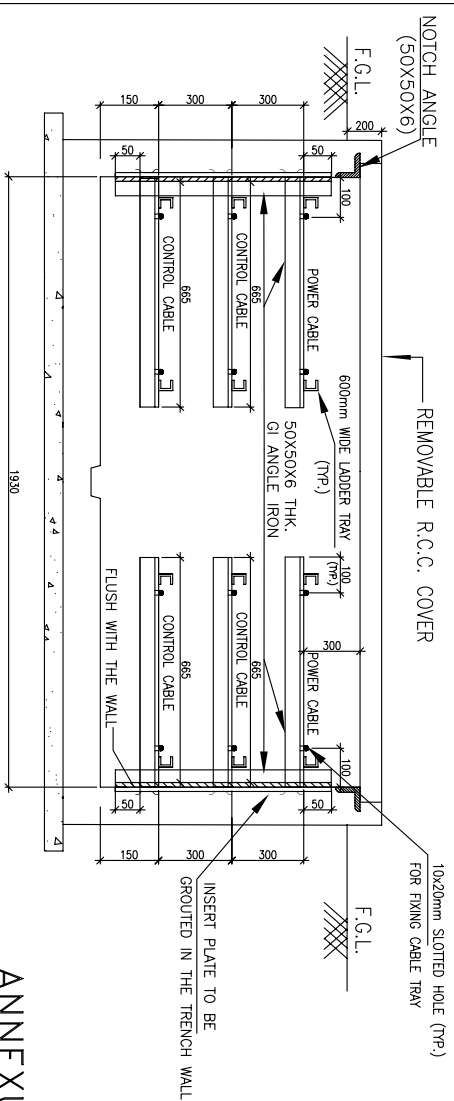
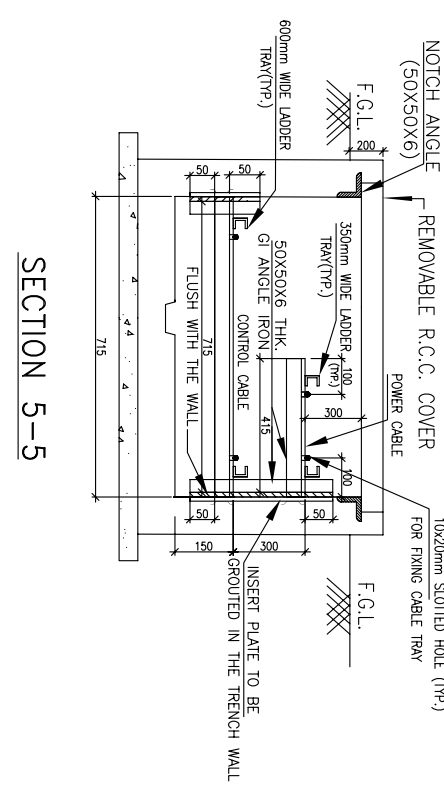
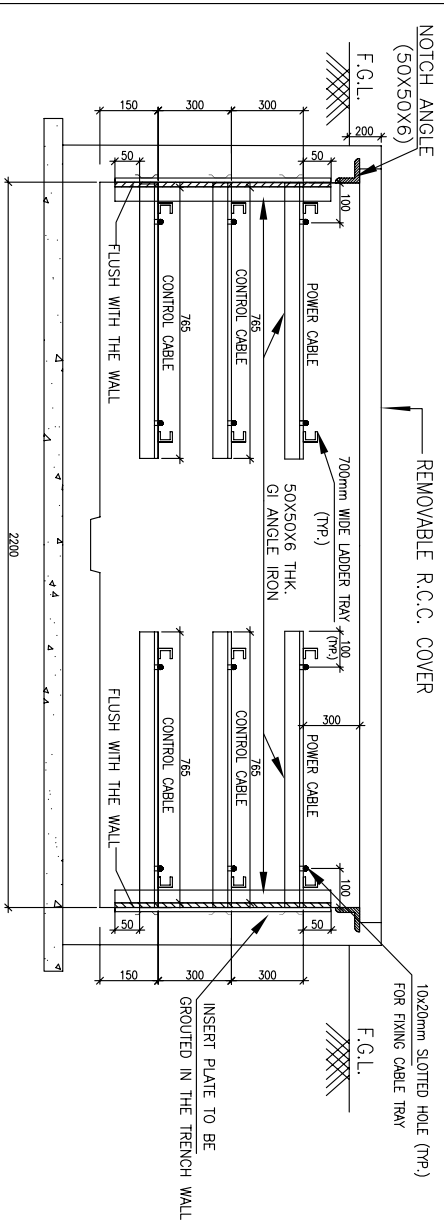
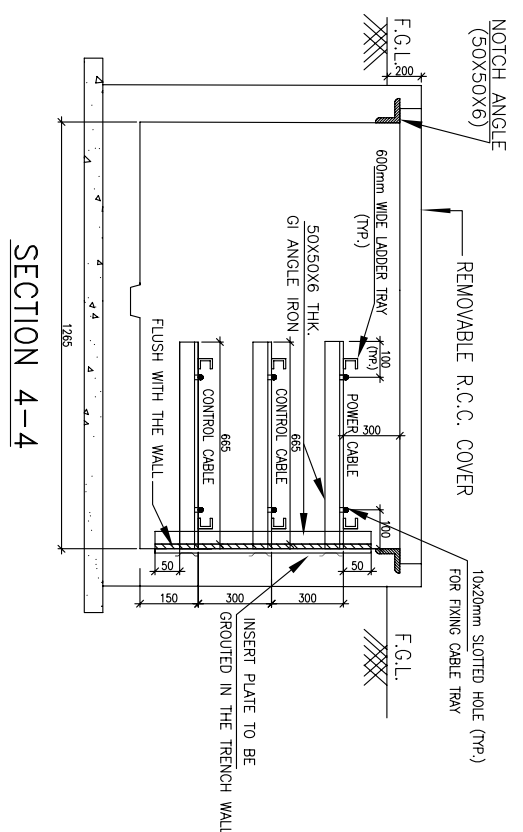
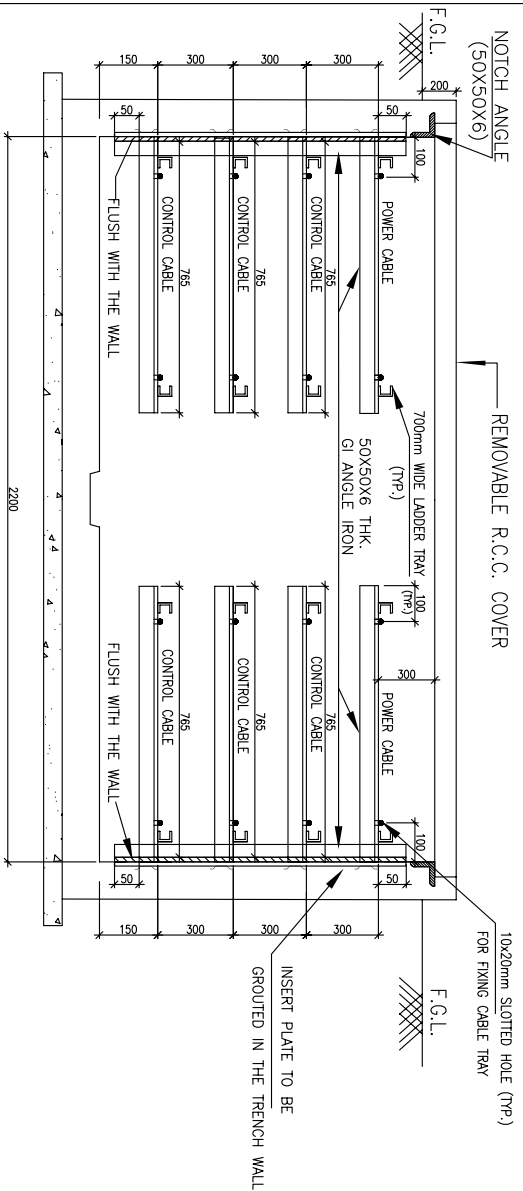


FIGURE –5

NOTES:-

1. ALL DIMENSIONS ARE IN mm.



SECTION 3-3

SECTION 2-2

SECTION 1-1

SECTION 5-5

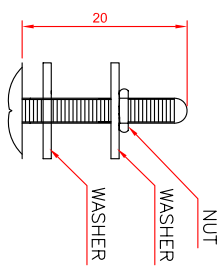
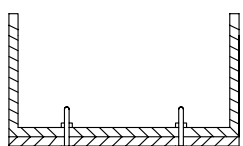
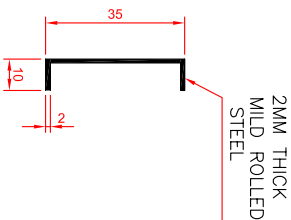
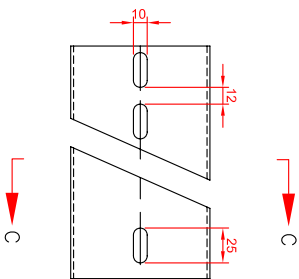
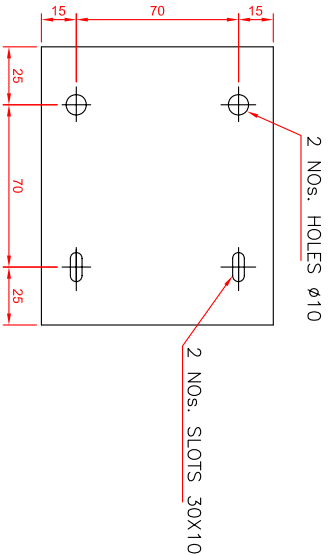
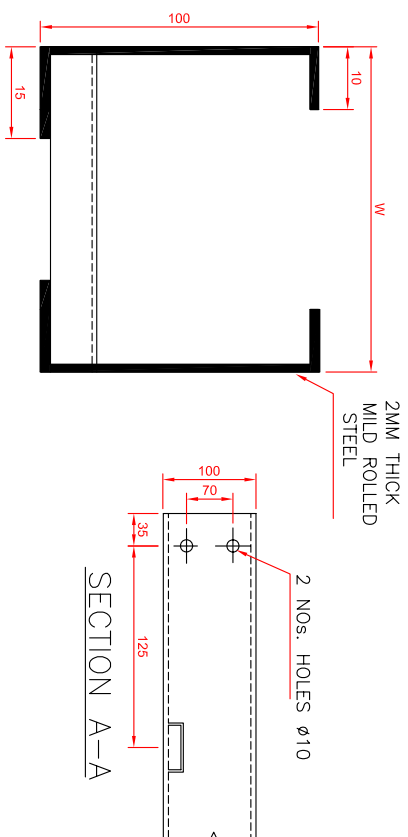
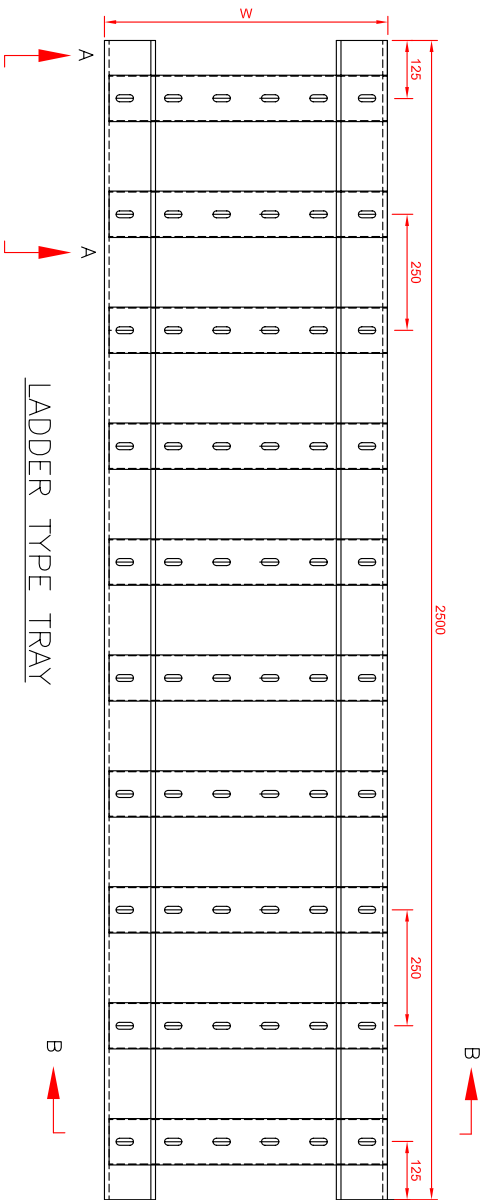
SECTION 4-4

SECTION 6-6

ANNEXURE-C

PROJECT-OTPC TRIPURA

ANNEXURE-C



NOTE:-

1. ALL DIMENSIONS ARE IN MM UNLESS OTHERWISE SPECIFIED.
2. LADDER TYPE CABLE TRAYS SHALL BE FABRICATED FROM ROLLED MILD STEEL, MINIMUM 2MM THICK FOR TRAYS AND 3MM THICK FOR COUPLER PLATE.
3. ALL NUTS, BOLTS AND WASHERS SHALL BE ZINC PASSIVATED.
4. CABLE TRAY ASSEMBLES SHALL BE FABRICATED AS PER IS : 1079 GRADE "O" / IS : 2026 GRADE "A". OTHERWISE SPECIFIED.
5. CABLE TRAYS, SIDE COUPLER PLATES & CABLE RACK ASSEMBLIES SHALL BE HOT DIP GALVANISED AS PER IS : 2629
6. FABRICATION TOLERANCE ± 5 MM TO BE ALLOWED.
7. TOLERANCE ON THICKNESS ± 0.2 MM TO BE ALLOWED. OTHERWISE SPECIFIED.
8. 1 NO COUPLER PLATE TO BE SUPPLIED PER JOINT.

W	700	600	350	300	200
---	-----	-----	-----	-----	-----